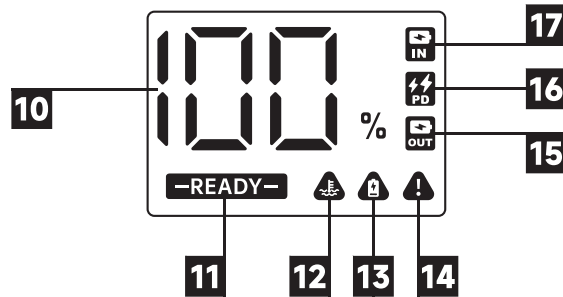
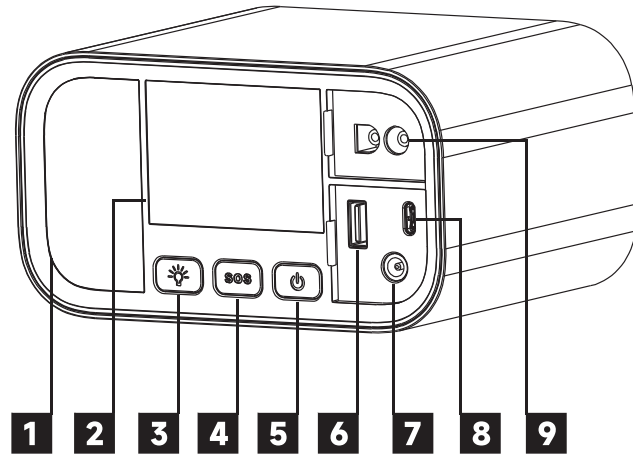


## Product Overview




- ① LED/SOS Light
- ② 3" Digital Screen
- ③ LED Light Button
- ④ SOS Light Button
- ⑤ Power On Button
- ⑥ USB-A Output : QC3.0 18W
- ⑦ DC Output : 12V/6A(max.10A)
- ⑧ USB-C PD60W IN/OUT
- ⑨ EC5 Engine Start Port
- ⑩ Battery Level
- ⑪ READY Indicator
- ⑫ High Temperature Indicator
- ⑬ Low Battery Indicator
- ⑭ Error Indicator
- ⑮ Charging Indicator
- ⑯ PD Indicator
- ⑰ Recharging Indicator



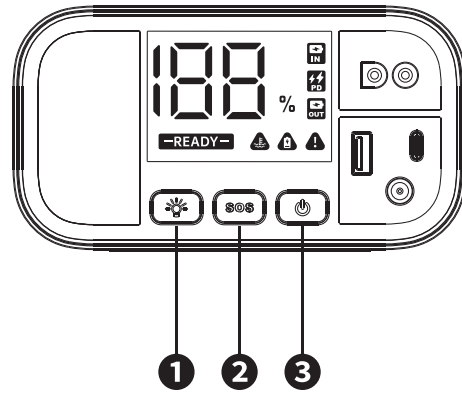
## Indicator Icons

	<b>READY Indicator:</b> Green READY light indicates the vehicle is ready to start.
	<b>High Temperature Indicator:</b> Icon will turn red when the operating temperature is too high. Continue using after 10 minutes cooling period.
	<b>Low Battery Indicator:</b> Icon will turn red when the battery level is low. Please fully charge unit before using.
	<b>Error Indicator:</b> Icon will turn red when an error occurs. Stop using the unit and contact customer service.
	<b>Recharging Indicator:</b> Icon will turn green when the jump starter begins to recharge.
	<b>PD Indicator:</b> Icon will turn green when charger or device to be charged supports PD 65W fast charge.
	<b>Charging Indicator:</b> Icon will turn green when a device is connected for charging.

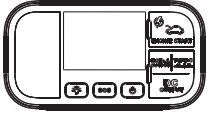
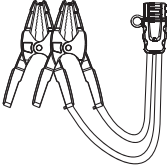



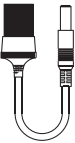


## Button Instruction

-  Press the button to operate as a lamp.
-  Press the button to activate the SOS morse code distress signal.
-  Press the button to turn on the device. The device will power off automatically after 30 seconds of non-use.

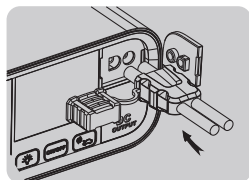
- ❶ LED Light Button      ❷ SOS Light Button
- ❸ Power On Button



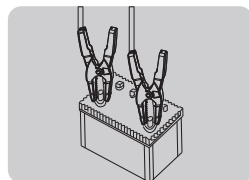
## What's In the Box

			
Main Unit	Non-Polarized Green Jumper Cable	PD 65W Charger	USB A-C Charging Cable
			
USB C-C Charging Cable	DC Cigarette Socket Adapter	User Manual	Carry Case

## Steps To Jump Start Your Vehicle



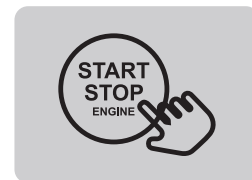
Plug cable end into the Engine Start port



Connect green clamps to (+) or (-) battery terminal



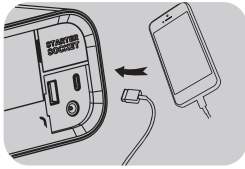
Wait for the solid green READY light



Start Engine

**⚠ Warning:** Do not attempt to switch the clamps when the green READY light is still on. Start the vehicle within 40 seconds.

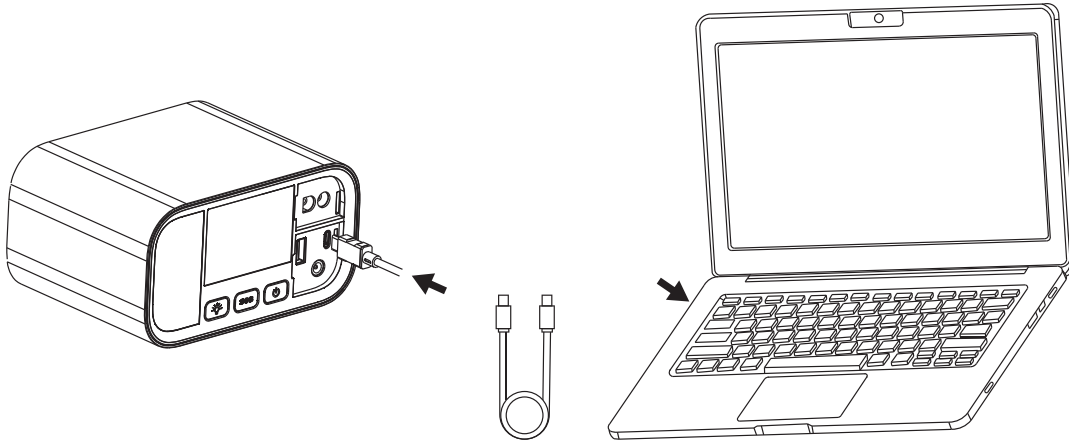
## Charge Your Devices



Plug device charging cable into the USB ports

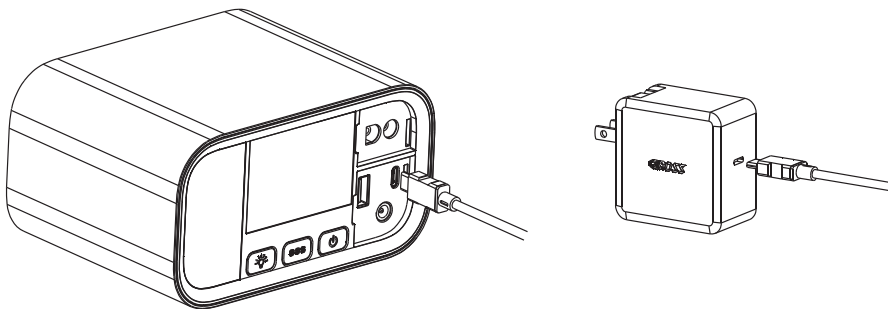
## Surprising Performance

You can charge your laptop with the T19 Jump Starter.



## Charge T19 Jump Starter

Connect the included USB C-C cable to the included PD65W charger. Plug the other end into the TYPE-C port on the jump starter.



Recharging Time Comparison			
T19 Jump Starter Support Power Delivery(PD)	Quick Charge (QC) USB Input	2Amp Current USB Input	1Amp Current USB Input
1 Hour	4.5 Hour	8.5 Hour	17 Hour

## Caution

1. Do not remove the screws to open the unit. The unit does not have any serviceable components inside. The warranty will be void if the unit has been tampered with.
2. Do not discard unit into fire. The lithium battery will cause a fire and possible explosion.
3. Keep out of direct sunlight and extreme hot or cold temperatures.
4. This is not a toy. Keep safely stored away from children. Children should not be present when using the jump starter.
5. Keep unit dry. The unit should not be used near standing water or wet areas such as bathtubs, showers, sinks, swimming pools or basements.
6. It is strictly forbidden to use this product in an environment where flammable gas is present.
7. Stop using the jump starter if you notice leaks, smells, or deconfiguration of the jump starter case.
8. Charge jump starter if battery level is 10% or below before using it to avoid damage to the unit.
9. Charge unit fully before first time using.

STORAGE: -4°F ~ 158°F (-20°C ~ 70°C)

DISCHARGE: 14°F ~ 122°F (-10°C ~ 50°C)

CHARGE: 32°F ~ 113°F (0°C ~ 45°C)

## CAROSS LLC

990 Industrial Rd.  
San Carlos, CA 94070  
Support@caross.net



How-To Video